

# the nu-mail

A high specification letterplate to complement the co-ordinated range of products from Fab & Fix



- Substantial solid die cast letterplate with elegant styling
- A flap opening of 180 degrees to fully meet the market expectations
- Fully sprung loaded for easy use: a customer friendly product
- Full weather-sealing to provide a draft free home environment
- Designed to suit panel, timber, composite and pvc-u door depths
- Choice of colours: White, Black, Hardex Gold, Bright Chrome, Bright Bronze, Satin Chrome and Satin Bronze
- Frame and flap are colour matched to create a desirable finished product
- Combines perfectly with the full Fab & Fix product range window handles, door handles, door hinges, knockers and numerals
- Can be face fixed or through screw fixed for ease of installation

Black



Satin Bronze



Satin Chrome

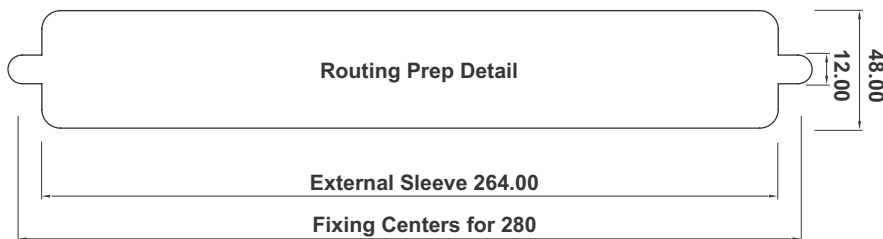
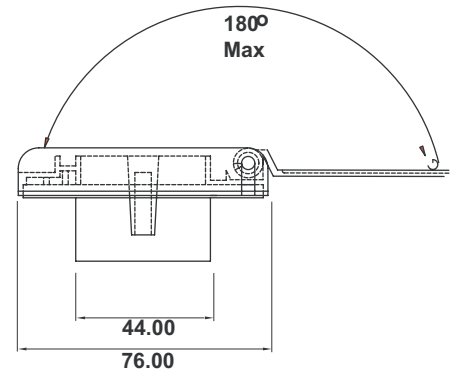
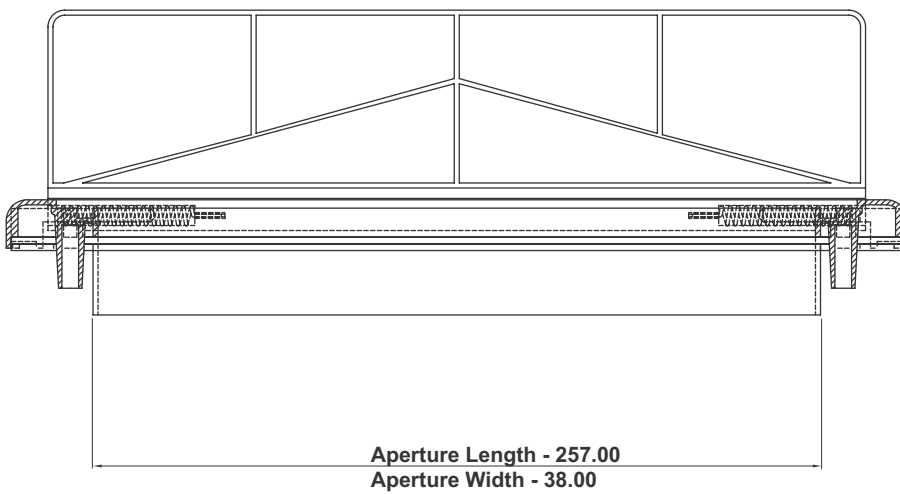
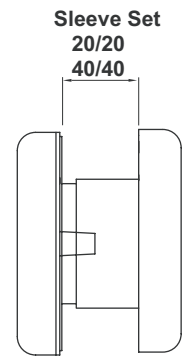
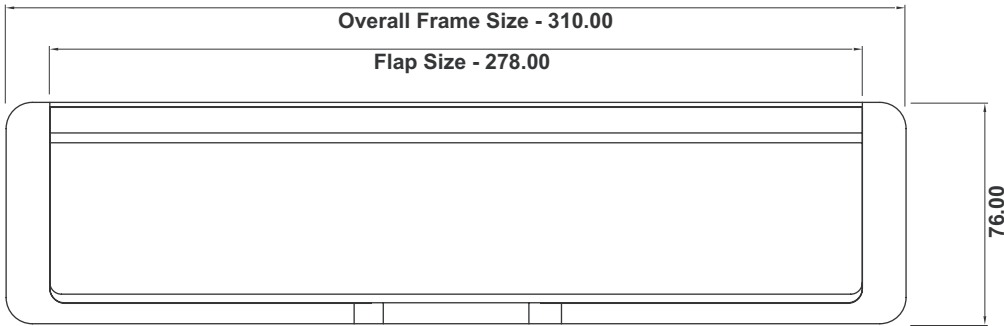


Hardex Gold



White





Fixing Screws Provided

Part Codes (please specify finish ??)

| LETTERBOX CODE | DESCRIPTION                                    | COLOUR CODE  |
|----------------|--|--|
| FFLP1220??     | Letterplate Nu-Mail 12" Up to 40mm Depth Doors | WH - White   |
| FFLP1240??     | Letterplate Nu-Mail 12" Up to 80mm Depth Doors | HG - Hardex Gold<br>BL - Black<br>BC - Bright Chrome<br>SC - Satin Chrome<br>BB - Bright Bronze<br>SB - Satin Bronze |

¥ Example: FFLP1220HG - Letterplate Nu-mail 12" Up to 40mm Door Depth Hardex Gold  
¥ Box quantities of 15 Letterplates

#### Product specification

¥ Tested to 50,000 cycles

¥ Materials conform to BS7412 clause 4. Die cast alloy to BS EN 12844. Steel parts to BS970 Part 1.

¥ Corrosion Resistant - BS EN 1670:1998 - 240 Hours (Very High) in acceptance to Clause 5.7 as specified in BS7412.

Tel: +44 (0)2476 585785 Fax: +44 (0)2476 585786